

# Pilot Boat “Gribbin”



She was built by Halmatic Marine of Hampshire on a Nelson class 48/50 hull nos 3313 in 1990. Certified to carry 10 persons out to 60 miles from the shore she had twin Scania engines .Her LOA 14.94m, breadth 4.0m and draft of 1.22 m with a displacement of 19.57 tonnes



Starting to strengthen the hull , laying up fibre matting and attaching the deck before glassing



The molded superstructure attached to the hull



All the fittings , windows and sights being fitted



Nearly completed and ready for launching



On trials in the Solent and as boat show boat a Southampton workboat show 1990

The Humber Gem was delivered to Hull shortly after the boat show and joined the other pilot cutters in the Humber where there were two or three sister vessels.

She served the Humber pilots until 2006 when ABP ports decided to replace her and others and put her up for sale.



With the down turn in trade in Fowey and the closure of Par harbour a reorganisation of the ports assets was needed. Polmear was transferred from Par to full time duties in Fowey

In March 2006 Gore point was sold and Treffry was placed on the market with .The Board of the Commissioners had decided to source a modern fibre glass pilot cutter. Several were inspected including one in Torbay however, it was finally agreed to purchase the Humber Pilots boat Number 4 “Humber Gem” She was surveyed by LGSA Marine on 19<sup>th</sup> April 2006 in the Albert Dock in Hull.



Humber Gem out board of sister cutters in Hull dock and in the hoist for inspection

Purchase was completed on 8<sup>th</sup> May 2006. The transaction was overseen by Captain Matt Hodson Deputy Harbour master and the passage crew of Pilot Will Mitchell, Steve Barker, Jim Hoddinott as engineer and Nathan Perkins a pilot boatman set sail on 9<sup>th</sup> May with stop overs in Great Yarmouth and Shoreham



Setting sail from the Humber(which way shall we go?)

At sea for the first time in FHC ownership



Entering Great Yarmouth



in the lock at Shoreham

The Board had chosen the name “Gribbin” as Gribbin Head was not available .



Gribbin arrived on a misty morning on 11<sup>th</sup> May



As was tradition a welcoming escort was given with vessels Treffry and Polmear in attendance for her arrival





Steve Barker stepping ashore at Albert Quay safely home. Harbour Master Capt. Mike Sutherland discussing the passage with Jim Hoddinott, Eddie Teutun with Will Mitchell and Nathan Perkin



Gribbin then entered a major refit program with both Scania engines being taken out and rebuilt. Other work was under taken and she was completely repainted and exhausts replaced. She had been worked hard with little time for maintenance and now was the time to give her a complete going over so that when she started in service she would be like new.



The engineroom space with engines out

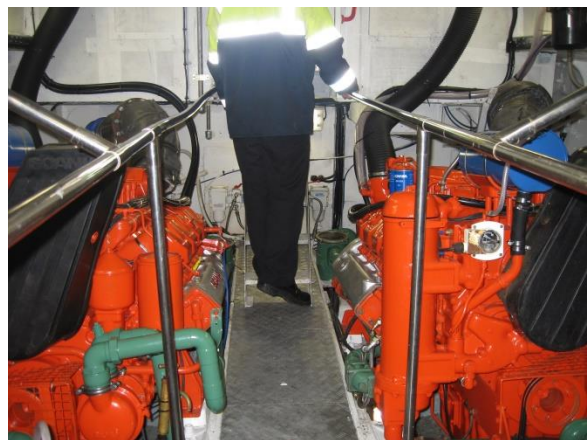


one of the Scania engines ready for overhaul





A Scania engine stripped down for inspection      the port engine going back with Jim Hoddinott



Both engines refurbished and back in newly painted engine room



propellers and rudders

Renamed Gribbin and registered in  
Fowey

She was renamed by Mrs Tessa Williams, wife of the chairman, Gerry Williams at 1230hrs on 30<sup>th</sup> November 2006 at Berrills Yard pontoon before the board meeting. She entered service at the end of the month.



Mrs Tessa Williams names "Gribbin" with chairman Gerry Williams and tug master Graham Nolan and deputy Harbour Master Matt Hodson looking on





Alongside Polmear and Tregeagle



On the brazen island slipway for maintenance



going around The World



Returning from boarding a pilot on a ship



escorting the Wisaforest



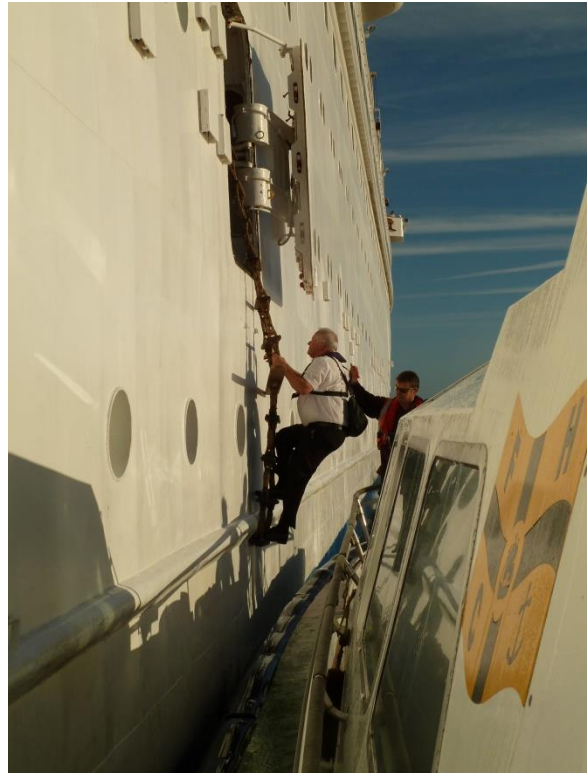


Kicking up spray at speed



Heading out to sea and returning to the harbour

Right boarding pilot Captain Charlie Woods  
with boatman Mike Elliott  
Below Gribbin waiting alongside to take off  
pilot



passing tugs Morgawr and Tregeagle waiting for a ship



Inwards and outwards





Approaching HMS Cornwall to take off pilot and passing Tregeagle



Looking forward with controls and access to engine room

Steering wheel and engine controls



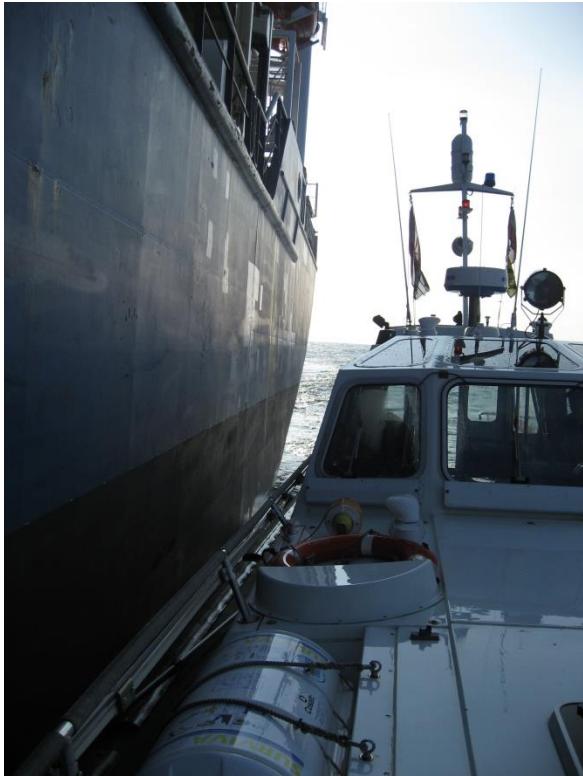
Looking aft with recovery davit on stern

Pilot boatman Nathan Perkin at controls



Waiting alongside cruise ship Regatta to take pilot off





Alongside waiting to take off the pilot



pilot on board heading away from ship



Pilot cutter gribbin inboard of pilot cutter Treffry

For a youtube view of a ship movement and Gribbin

<https://www.youtube.com/watch?v=kL0iHFJBawg>